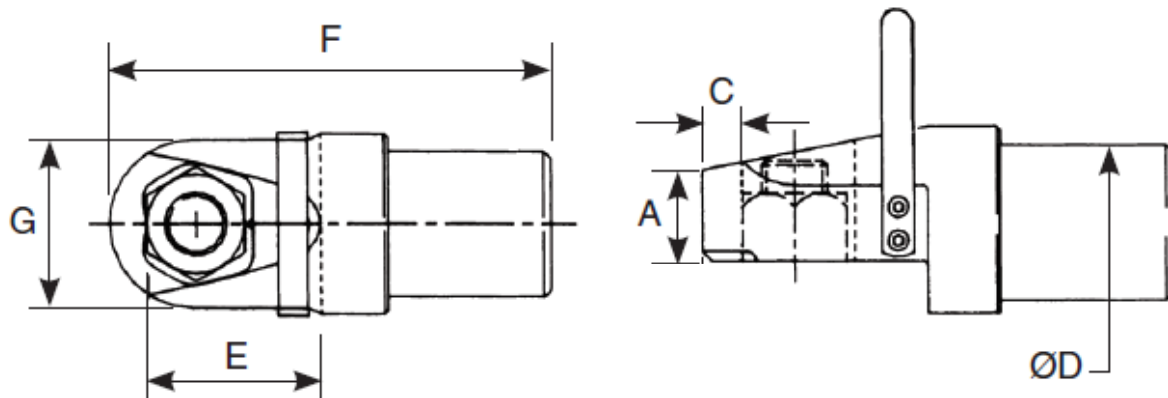


# Nut Splitter



Tool No.	Bolt Size	Nut Size A/F	A (mm)	C (mm)	D (mm)	E (mm)	F (mm)	G (mm)	Wt. (kg)	
Cyl. A	Head #2	3/4" - 7/8"	1-1/4" - 1-7/16"	41	15	76	60	218	66	6.2
	Head #4	1" - 1-1/2"	1-5/8" - 1-13/16"	41	18.5	76	75	231	80	7
Cyl. B	Head #5	1-1/8" - 1-1/4"	1-13/16" - 2"	56	19.5	95	103	276	86	8
	Head #6	1-1/4" - 1-3/8"	2" - 2-3/16"	56	21	95	108	282	92	9
	Head #7	1-3/8" - 1-1/2"	2-3/16" - 2-3/8"	56	22.5	95	111	287	102	11
	Head #8	1-1/2" - 1-5/8"	2-3/8" - 2-9/16"	56	24	95	115	294	110	14
	Head #9	1-5/8" - 1-3/4"	2-9/16" - 2-3/4"	56	25.5	95	122	300	114	19
Cyl. C	Head #10	1-3/4" - 1-7/8"	2-3/4" - 2-15/16"	78	27	143	137	374	124	25.5
	Head #11	1-7/8" - 2"	2-15/16" - 3-1/8"	78	29	143	141	378	131	32
	Head #12	2" - 2-1/4"	3-1/8" - 3-1/2"	78	30.5	143	150	390	144	39.5
	Head #14	2-1/2" - 2-3/4"	3-7/8" - 4-1/4"	78	33	143	169	412	170	55.5
Cyl. D	Head #15	2-3/4" - 3"	4-1/4" - 4-5/8"	109	39.5	176	194	497	192	64
	Head #16	3" - 3-1/4"	4-5/8" - 5"	109	41	176	204	508	203	73
	Head #17	3-1/4" - 3-1/2"	5" - 5-3/8"	109	42.5	176	212	518	216	83

Max. working pressure 20,000 PSI (1400 bar)